

FIGURE 4.1 - BASE SCENARIO LAND USE PLAN

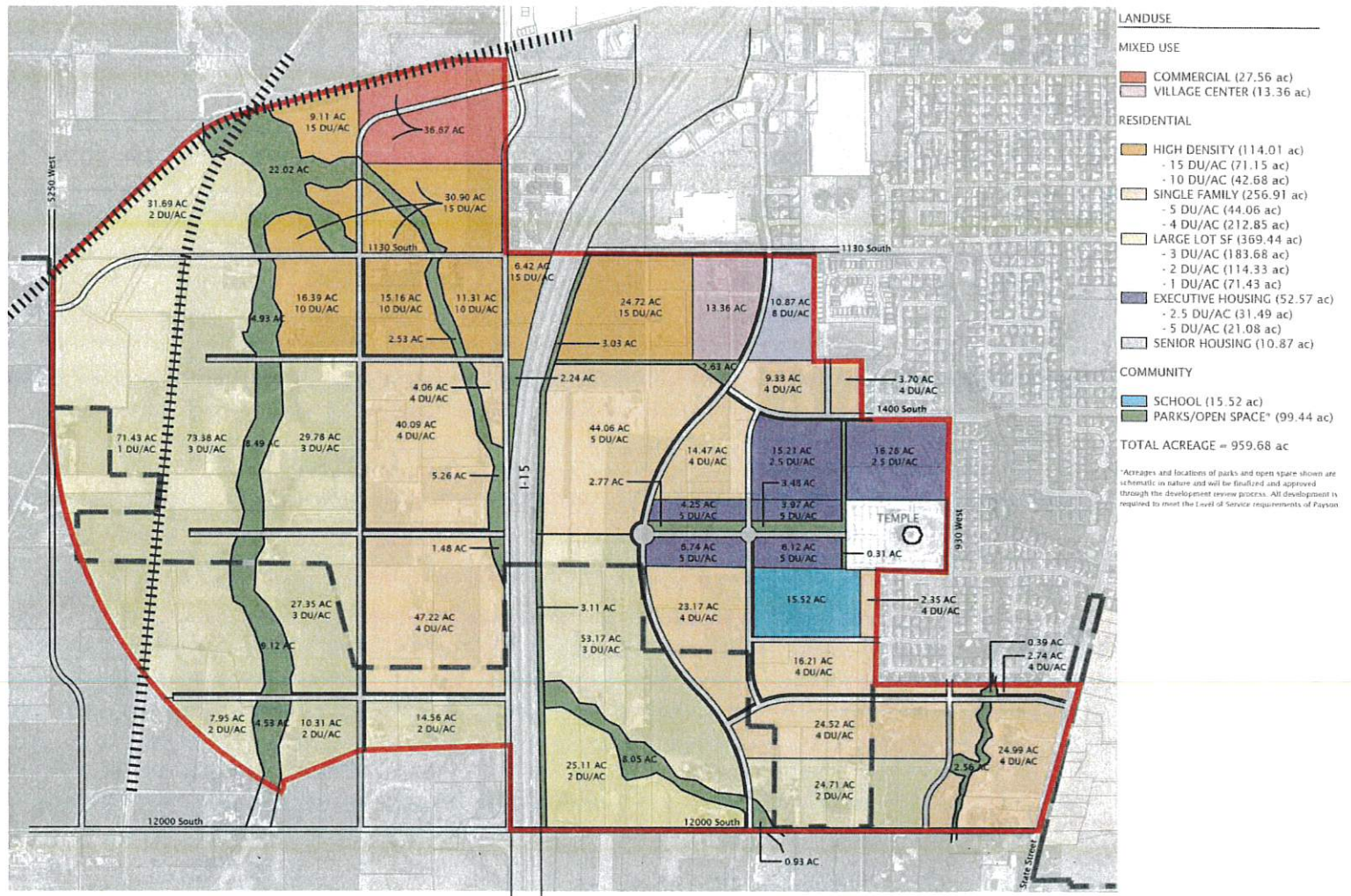
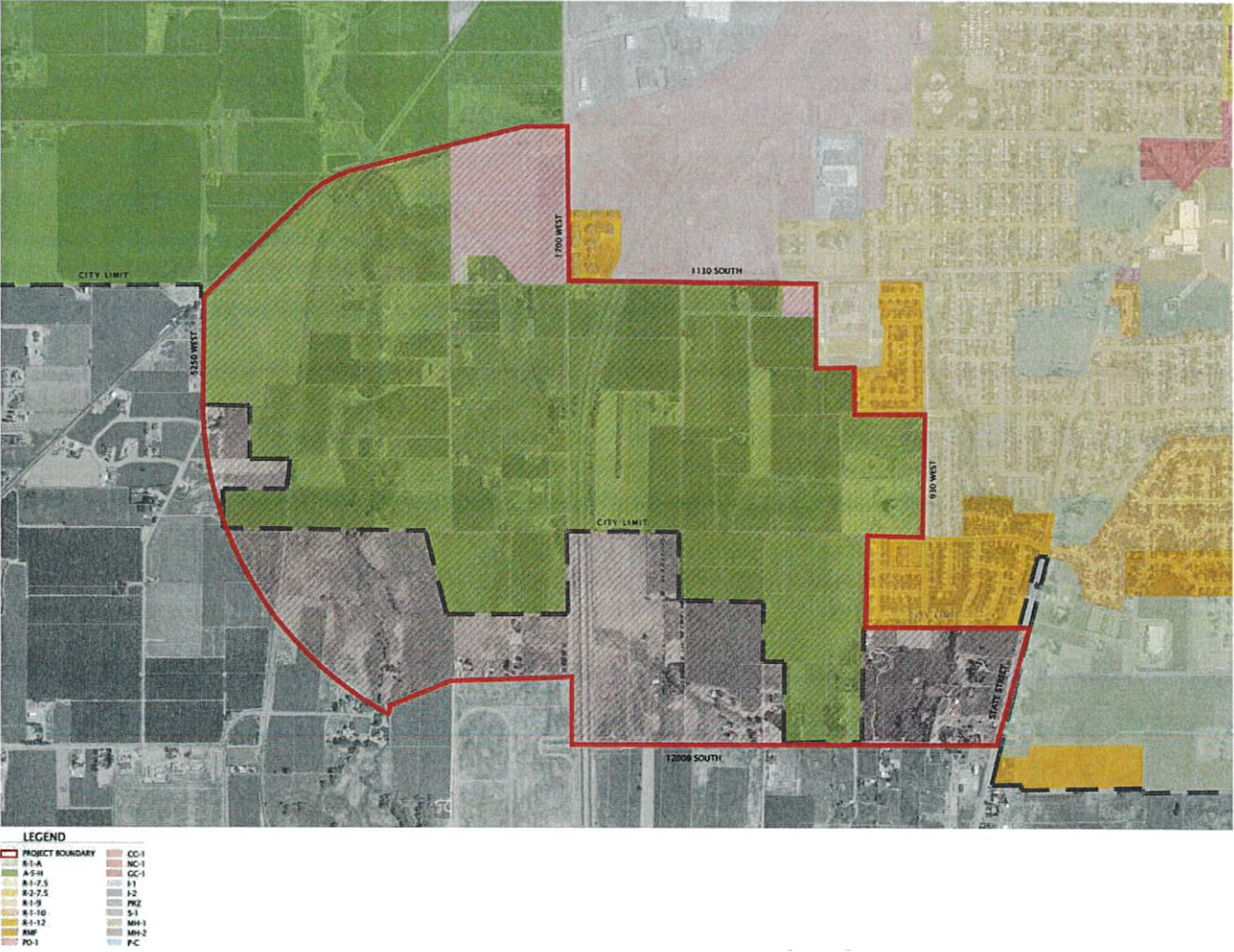





FIGURE 1.1 - SOUTH MEADOWS PLANNING AREA



Reason for Zone Change request:

The best use of the property for Spring Lake Investments LLC and Payson city would be residential with 4 DU / acre. This concurs with Payson City's plan that was available on their website on 6/16/2020 and attached to this application. The current zoning is an Agriculture Holding Zone. Plan on moving forward with a subdivision within the next 12 months.



Marty Larson

6/16/2020